

Go Through Security Screening Stress Free

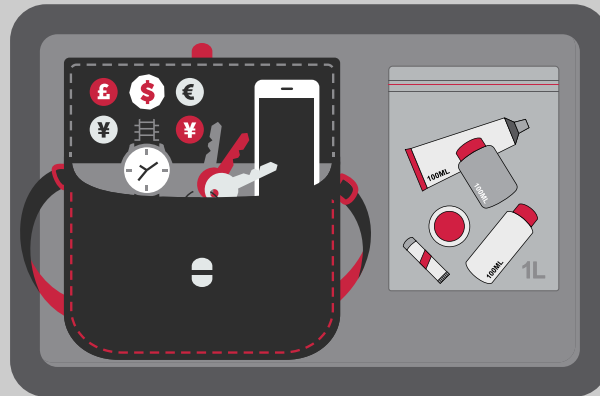
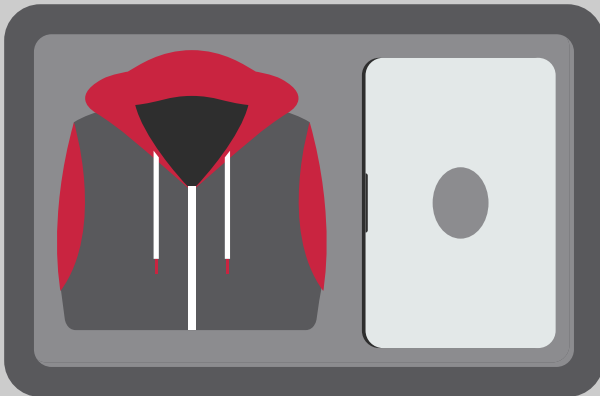
Arrive Early

Arrive 2 hours prior to domestic flight departures, and 3 hours for international flight departures.

Have your boarding pass ready

If your boarding pass is on your cell phone, place it in your bag after it is scanned.

The Bins



► Place in the bins:

Outerwear: Remove bulky sweaters and winter coats.
Laptops: Unpack from its case.

► Keep in your carry-on:

Metal items: Coins, keys, watches and jewellery.
Small electronics: Smartphones, tablets, e-readers and cameras.

► Liquids, aerosols, gels:

Place your 1L plastic bag of liquids, aerosols and gels in the bin.

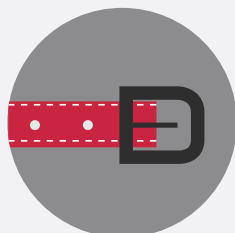
► Exempted liquids:

Medications, baby formula, and breast milk: Be prepared to show them to the screening officer.

The Metal Detector



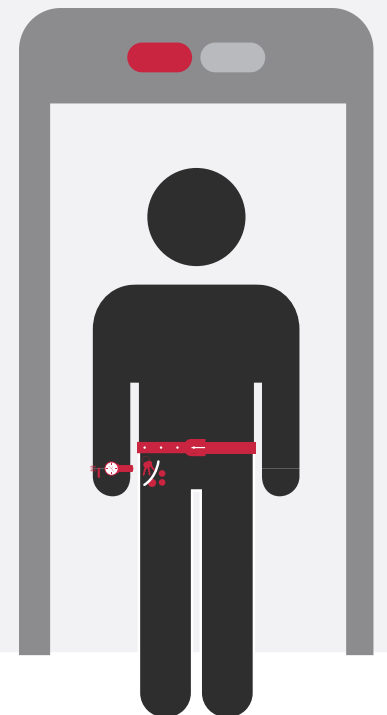
► **Metal items** (coins, keys and even gum wrappers) **can set off the detector.** Put them in your carry-on bag.



► You may be asked to unbuckle your **belt** and hold out the ends to either side for the screening officer to inspect.



► You may be asked to remove your **footwear.** Some, like construction boots and high-heeled shoes, can contain metal shanks.



Connect with us!



www.catsa.gc.ca



CATSAGC



@CATSA-ACSTA



@catsa_gc



Scan the QR code for more information.